



QUICK START GUIDE

USB-C Ultra 5K Universal Docking Station



WAVLINK (@WavlinkOfficial)
WAVLINK SUPPORT (@WavlinkTechSupport)

Safety Instructions

Always read the safety instructions carefully.

Keep this Quick Guide for future reference.

Keep this equipment away from humidity.

If any of the following situation arises, get the equipment checked by a service technician:

- The equipment has been exposed to moisture.
- The equipment has been dropped and damaged.
- The equipment has obvious sign of breakage.
- The equipment has not been working well or you cannot get it work according to User's Manual.

Copyright Statement

No part of this publication may be reproduced in any form by any means without the prior written permission.

Other trademarks or brand names mentioned herein are trademarks or registered trademarks of their respective companies.

Disclaimer

Information in this document is subject to change without notice. The manufacturer does not make any representations or warranties (implied or otherwise) regarding the accuracy and completeness of this document and shall in no event be liable for any loss of profit or any commercial damage, including but not limited to special, incidental, consequential, or other damage.

WEEE Directive & Product Disposal



At the end of its serviceable life, this product should not be treated as household or general waste. It should be handed over to the applicable collection point for the recycling of electrical and electronic equipment, or returned to the supplier for disposal.

1. Introduction	01
Features	02
In the Box	03
System Requirements	03
WL-UG69DK7	04
Application	05
Front Panel	07
Rear Panel	08
WL-UG69DK1	09
Application	10
Front Panel	12
Rear Panel	13
2. Driver Installation	14
3. Configurations (Windows 10)	14
Audio Setting	14
Video Setting	16
Advanced Display Mode	18
Uninstalling the Driver	19
4. Configurations (Mac OS X)	20
Introduction	20
Setup Guide	21
Connecting Displays to Your Mac	22
Mac OS X Setting	24

Introduction

The new USB Type-C connector works seamlessly with this Ultra HD 5K Universal Docking Station. It can connect to any host with Standard A or Type C connectors providing a fully backward-compatible and future-proof docking solution. Allow you to connect up to two additional monitors and 14 accessories including through a single USB cable. Including the latest drivers for compatibility with Windows 10, 8.1 and 7 or Apple Mac OS

The USB-C Ultra 5K Universal Docking Station Software allows full configuration of all additional USB displays, including:

- Support for up to 6 additional USB Displays (Windows)
- Support for up to 4 additional USB Displays (Mac OS X)
- Expand USB 3.0 connectivity
- Supports dual DP or dual HDMI displays
- Gigabit Ethernet
- Mic In and Audio out
- Extended, Mirrored, Primary Display
- Extend left, right, above, or below
- Rotation

Features

- Compatible with both Type-C and Type-A Laptop/Desktop Computer
- Supports resolutions up to 5K(5120×2880@60HZ)when connecting dual DP ports simultaneously to a 5K monitor
- Dual 4K HDMI/Dual 4K DisplayPort/4K HDMI+4k DisplayPort output
- Supports Extended and Mirrored Video Mode
- Supports 5.1 Channel Surround Sound through HDMI/DP ports
- Built-in USB 3.0 GPU, Plug and Display
- Separate microphone input and audio output
- SuperSpeed USB 3.0, speed up to 5Gbps and backward compatible with 2.0/1.1
- Built-in 10/100/1000BASE-T Gigabit Ethernet RJ45 for increased network performance
- 15 Ports of Incredible Connectivity

WL-UG69DK1

- Built-in six SuperSpeed USB 3.0 (up to 5Gbps) Type-A ports, backward compatible with 2.0/1.1
- Built-in one ON/OFF power switch

WL-UG69DK7

- Aluminum alloy body
- Built-in four SuperSpeed USB 3.0 (up to 5Gbps) Type-A ports, backward compatible with 2.0/1.1
- Built-in two SuperSpeed USB 3.0 Gen 1 (up to 5Gbps) Type-C ports

In the Box

Before installation, please check the items in the package. The package should be contained the following items :

- 1 x USB-C Ultra 5K Universal Docking Station
- 1 x USB 3.1 C to C Cable
- 1 x USB 3.1 A to C Cable
- 1 x Quick **Start** Guide
- 1 x DC20V Certified Power Adapter

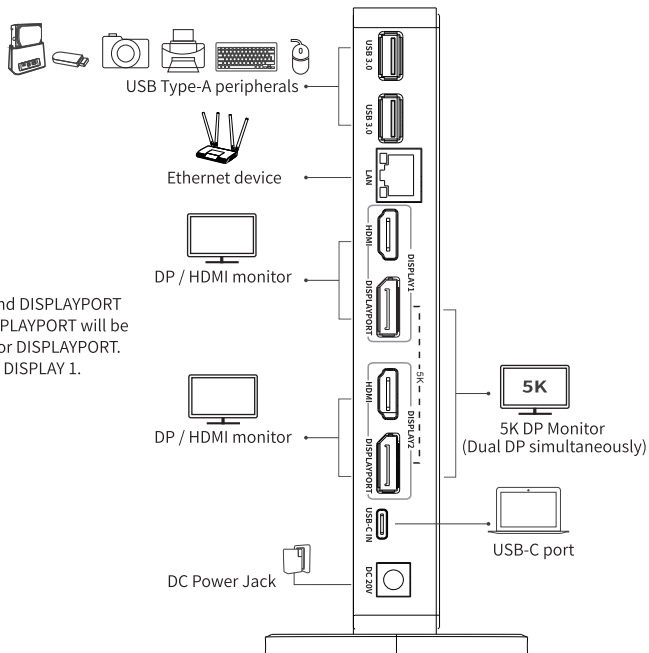
System Requirements

- Windows 7/8/8.1/10 or higher
- Mac os 10.9 or higher

Windows XP SP2 and Vista are supported by older versions of the DisplayLink software: <http://www.displaylink.com/downloads>

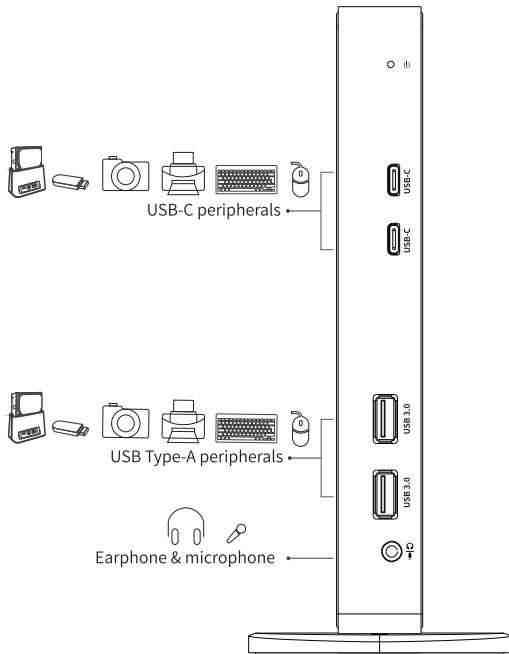
WL-UG69DK7

Application

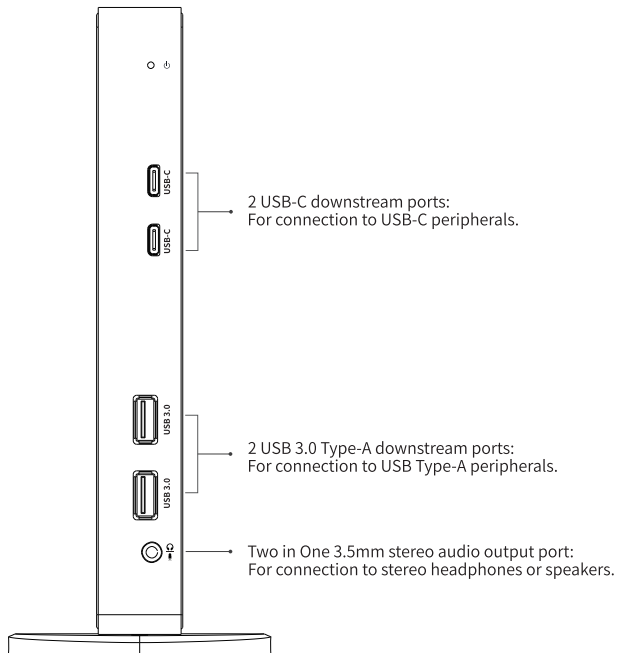


NOTE:

- On DISPLAY1, Connecting HDMI and DISPLAYPORT to monitors at the same time, DISPLAYPORT will be worked priorly. Select only HDMI or DISPLAYPORT.
- On DISPLAY2, it works same as on DISPLAY 1.



Front Panel



Rear Panel

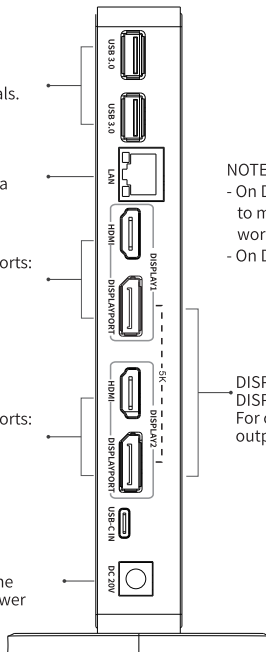
2 USB 3.0 Type-A downstream ports:
For connection to USB Type-A peripherals.

10/100/1000Mbps Ethernet port:
For connection to Ethernet network via a network cable.

HDMI and DISPLAYPORT video output ports:
For connection to a HDMI monitor or a DISPLAYPORT monitor.

HDMI and DISPLAYPORT video output ports:
For connection to a HDMI monitor or a DISPLAYPORT monitor.

Power jack:
For connection to the power adapter. The Docking Station requires an external power supply for operation.



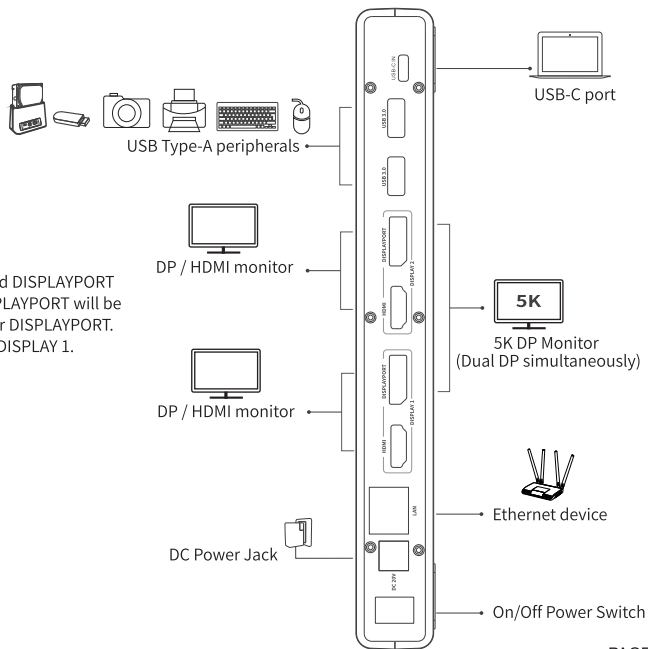
NOTE:

- On DISPLAY1, Connecting HDMI and DISPLAYPORT to monitors at the same time, DISPLAYPORT will be worked priorly. Select only HDMI or DISPLAYPORT.
- On DISPLAY2, it works same as on DISPLAY 1.

DISPLAYPORT of DISPLAY1 + DISPLAYPORT of DISPLAY2 video output ports:
For connection to a dual-DISPLAYPORT monitor to output 5K video.

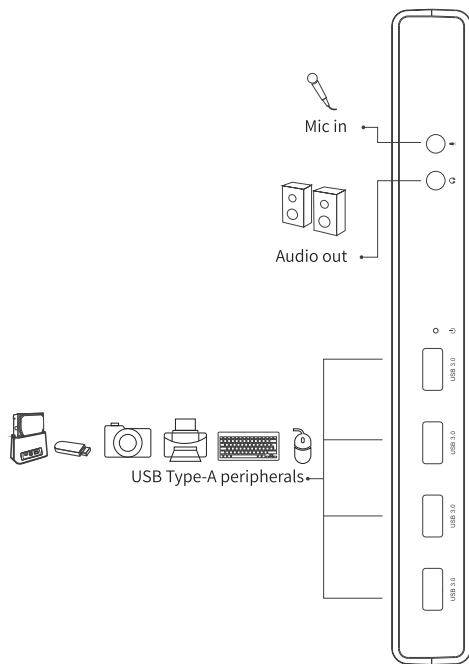
WL-UG69DK1

Application

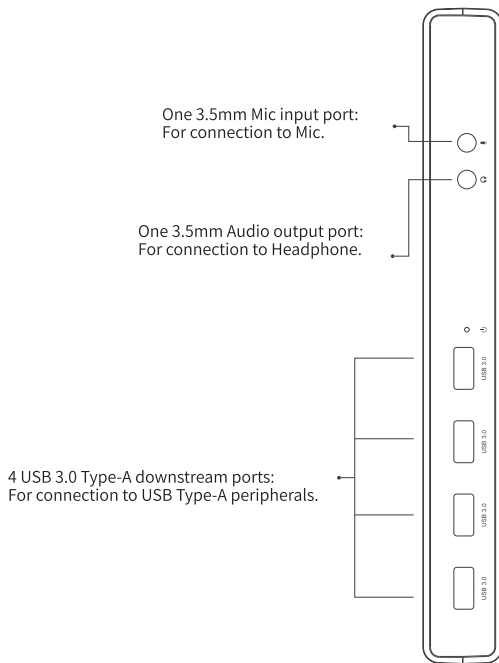


NOTE:

- On DISPLAY1, Connecting HDMI and DISPLAYPORT to monitors at the same time, DISPLAYPORT will be worked priorly. Select only HDMI or DISPLAYPORT.
- On DISPLAY2, it works same as on DISPLAY 1.



Front Panel



Rear Panel

2 USB 3.0 Type-A downstream ports:
For connection to USB Type-A peripherals.

HDMI and DISPLAYPORT video output ports:
For connection to a HDMI monitor or a
DISPLAYPORT monitor.

HDMI and DISPLAYPORT video output ports:
For connection to a HDMI monitor or a
DISPLAYPORT monitor.

Power jack:
For connection to the power adapter. The
Docking Station requires an external power
supply for operation.

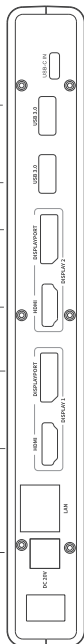
NOTE:

- On DISPLAY1, Connecting HDMI and DISPLAYPORT to monitors at the same time, DISPLAYPORT will be worked priorly. Select only HDMI or DISPLAYPORT.
- On DISPLAY2, it works same as on DISPLAY 1.

DISPLAYPORT of DISPLAY1 + DISPLAYPORT of
DISPLAY2 video output ports:
For connection to a dual-DISPLAYPORT 5k monitor to
output 5K video.

10/100/1000Mbps Ethernet port:
For connection to Ethernet network via a
network cable.

On/Off Power Switch



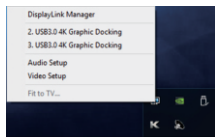
Driver Installation

Please visit either https://www.wavlink.com/en_us/drivers.html or <https://www.displaylink.com/downloads> to download the latest version of the driver and install it.

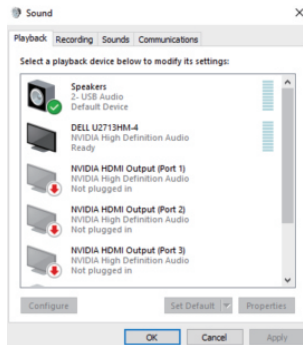
Configurations (Windows 10)

Audio Setting

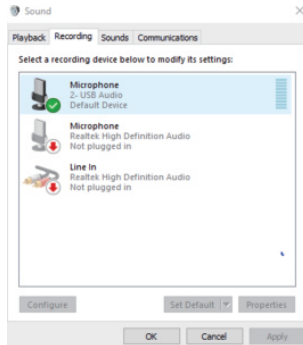
1. From the taskbar, click the DisplayLink Icon, then click Audio Setup.



2. Choose Speaker.

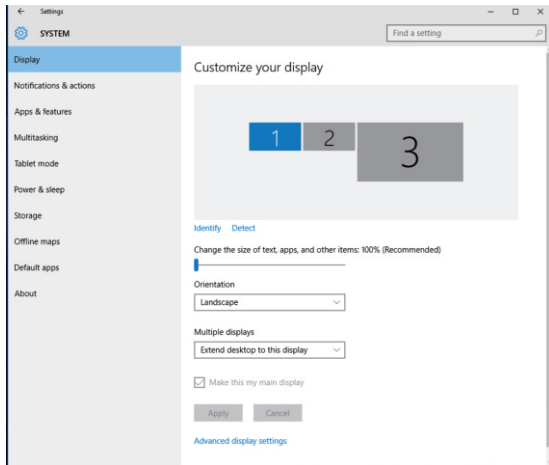


3. Choose Microphone.

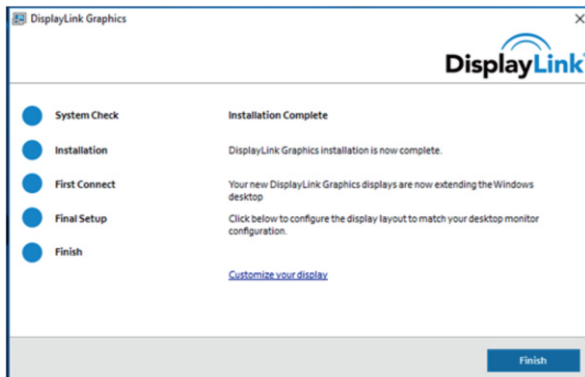


Video Setting

1. From the taskbar, click the DisplayLink Icon, then click Video Setup.
2. Select Display and choose Orientation to select Extend desktop to this display.



4. Please wait while Windows configures the DisplayLink Core Software. Your screen may temporarily go black or flash during this process.

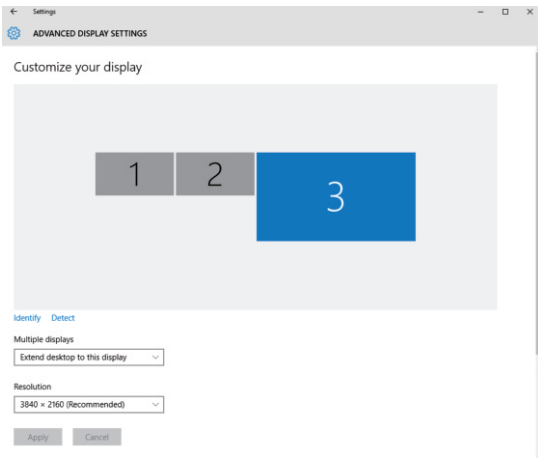


5. When finished, the installation screen will disappear, and you will be returned to your desktop.

Note: On some computers, you may need to reboot before being able to use your USB-C dock.

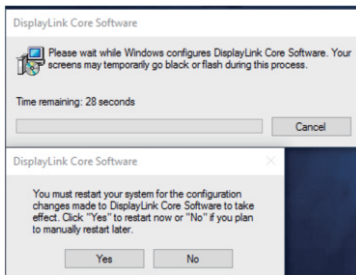
Advanced Display Mode

1. From the taskbar, click the DisplayLink Icon, then click Video Setup.
2. Select Advanced Display Settings and choose a recommended resolution.



Uninstalling the Driver

The uninstallation will be slightly different depending on your operating system.



Please take these steps to uninstall the Driver on Windows

1. From Start Menu, open Control Panel.
2. From the Programs item, click Uninstall program.
3. Double click on DisplayLink Core software. A Windows confirmation dialog opens (if nabled)
4. Click Yes.
5. A message may appear to state which software packages will also be uninstalled.
Click Yes to uninstall the packages that use DisplayLink Core Software.
The uninstaller automatically uninstalls the software.
6. Once uninstalled, you will be prompted to reboot. Click Yes to complete the uninstall.

Introduction

This guide applies to software version 1.0 and above of the MAC software.

What is the Mac Driver?

The Mac driver is designed for Mac OS X 10.4 (Tiger), 10.5 (Leopard) and 10.6(Snow Leopard), 10.7.5(Lion)

10.8.2(Mountain Lion) to enable you to add an additional monitor to your Mac using DisplayLink technology.

This software allows you to run your UGA devices on any Intel based desktop or laptop Mac, allowing you to connect up to 4 additional monitors via USB.

Please Note: Power PC-based Macintosh computers, such as late-model iMacs, PowerBooks and PowerMacs, are not currently supported.

Setup Guide

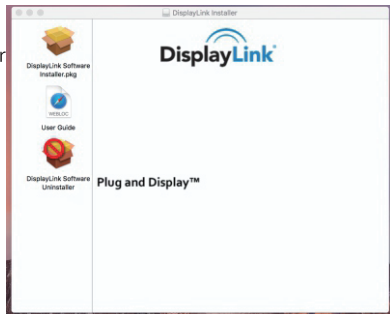
Installing/Uninstalling the MAC Driver

To run the MAC Installer, double-click the MAC DriverInstaller image: this will mount the MAC Driverinstaller.

Select Software Installer to begin installing the MAC Driver on your Mac. This will run a standard Mac installer and will require a restart once complete.

Select User Guide to view the User Guide.

Select Software Uninstaller to uninstall the MAC Driver from your Mac. This will require a restart once complete.



Connecting Displays to Your Mac

1. You have installed the MAC Driver.
2. Connect each display to the device.

You can now connect up to 4 additional displays with a extra dock. Example setups include:

Example One:

1. Connect MacBook Pro to the powered dock.
2. Connect monitors to the dock via standard HDMI and DisplayPort cables.

WL-UG69DK7



WL-UG69DK1

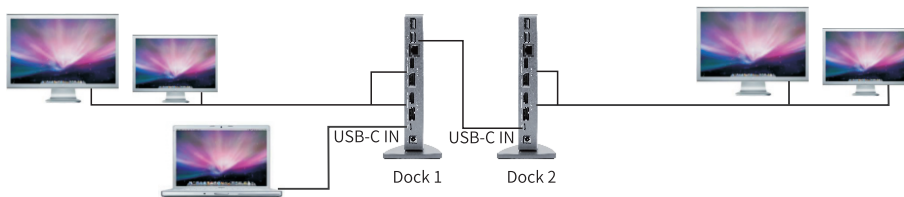


Example Two:

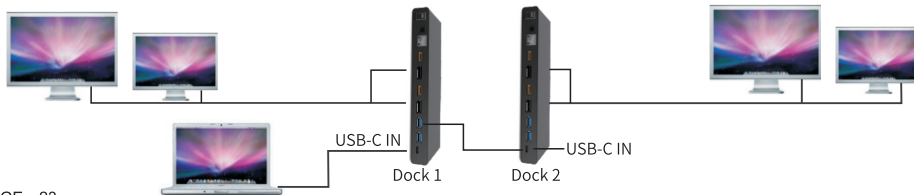
1. Connect MacBook Air to the powered dock.
2. Connect a USB port (USB 3.0 port or USB-C port) of Dock 1 to the USB-C IN port of Dock 2 (not provided) via a USB cable (not provided).
3. Connect monitors to the dock via standard HDMI and DisplayPort cables.

NOTE: WL-UG69DK7/WL-UG69DK1 can work with any compatible dock or hub to set up similar connections as shown in the drawings below.

WL-UG69DK7

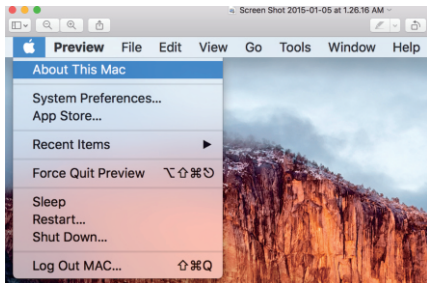


WL-UG69DK1



Mac OS X Setting

1. Open System Preferences.



2. click Displays and configure.

