



## Quick Start Guide

### USB-C Gigabit Ethernet Adapter



[www.wavlink.com/en\\_us/WL-NWU327GC](http://www.wavlink.com/en_us/WL-NWU327GC)  
Scan the QR code or load the link for  
Quick Start Guide and Driver downloading



WAVLINK (@wavlinkOfficial)  
WAVLINK SUPPORT (@wavlinkTechSupport)

WL-NWU327GC

## Introduction

This USB-C Gigabit Ethernet adapter converts a USB-C port into a 10/100/1000 Ethernet port. For devices with damaged network cards or high signal quality requirements, using this adapter is the most economical way. It is small in size and possesses popular USB-C port, which can be connected to desktops, notebooks, tablets and other devices.  
Thank you for choosing this USB-C Gigabit Ethernet adapter!

## Features

- Single chip USB-C to Gigabit Ethernet controller.
- Compliant to USB Spec 3.0, 2.0 and 1.1.
- Supports Wake-On-Lan.
- Supports Auto MDIX (straight and cross network cable auto-detection).
- Adaptive Equalization; Crosstalk & Echo Cancellation; Timing Recovery.
- Supports full Duplex flow (IEEE 802.3x) and half Duplex.
- Compliant with IEEE 802.3, IEEE 802.3u and IEEE 802.3ab.
- Supports IEEE 802.3az-2010(EEE); IEEE 802.1P; IEEE 802.1Q.
- Supports jumbo frame to 9K bytes.
- Driver-free for Windows 10/8.X, Mac OS 10.X, 11.X.

1

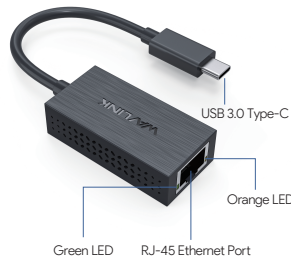
## System Requirements

- PC/Laptop with USB-C port
- OS: Windows 10/8.X, Mac OS 10.X, 11.X

## In the Box

Before installation, please check the items of the package.  
1 x USB-C Gigabit Ethernet Adapter  
1 x Quick Start Guide

## LED Descriptions

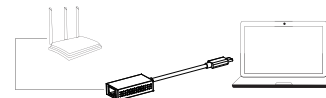


2

**Solid green:** Network connection is normal.  
**Blinking orange:** Data transmission is normal.  
**Off:** The adapter is not receiving electrical power and no Ethernet connection is detected.

## Plug and Play

- Step 1:** Plug in the adapter, then connect an Ethernet cable between your router or modem to the Ethernet port on the adapter.
- Step 2:** Just start using it when Green LED (Link) is solid and Orange LED (ACT) is blinking.



**Note:**

- Open a browser and test the connection.
- If the driver cannot be installed automatically, please download the driver in [www.wavlink.com/en\\_us/WL-NWU327GC](http://www.wavlink.com/en_us/WL-NWU327GC) or you can contact our customer service.

3

## Network Configuration

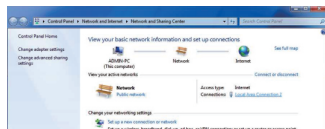
Please ensure you have connected your network device, e.g. Switch/Router/DSL/Cable modem to the adapter's LAN port via an Ethernet cable and plug the adapter into a USB port.

### Notes on Ethernet Cables :

Sometimes a so-called crossover Ethernet cable is required for connection to certain network equipments. As the adapter's LAN port supports Auto-MDIX feature, it eliminates the need to use crossover cables.

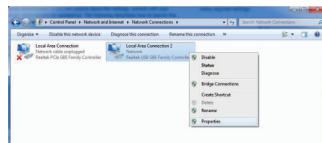
## For Windows Users

1. Right-click the network icon in the system tray and select **Network and Sharing Center**.
2. Click **Change adapter settings**.

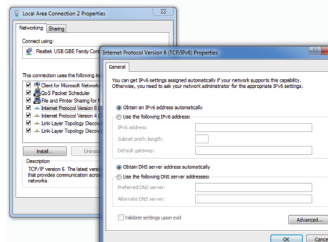


4

3. Right-click the **Local Area Connection** icon indicating your network adapters and click **Properties**.



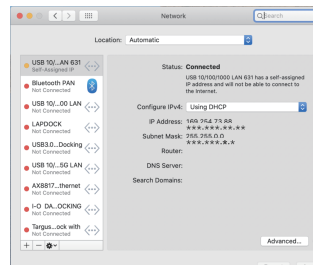
4. Then the **Local Area Connection Properties** window appears for you to make required settings.



5

## For MAC Users

Go to **Apple Menu>System Preferences>Network**. You could now see "connected" and "USB 10/100/1000 LAN 631.....", your new Ethernet adapter should now be available.



### WEEE Directive & Product Disposal

At the end of its serviceable life, this product should not be treated as household or general waste. It should be handed over to the applicable collection point for the recycling of electrical and electronic equipment, or returned to the supplier for disposal.

6



**Thank you for purchasing  
WAVLINK product!**

Official website: [www.wavlink.com](http://www.wavlink.com)  
Technical support: [support@wavlink.com](mailto:support@wavlink.com)

7