



Quick Start Guide

USB-C Gigabit Ethernet Adapter



WAVLINK (@WavlinkOfficial)
WAVLINK SUPPORT (@WavlinkTechSupport)

WL-NWU327GC

Introduction

This USB 3.0 Gigabit Ethernet adapter converts a USB 3.0 port into a 10/100/1000 Ethernet port. For devices with damaged network cards or high signal quality requirements, using this adapter is the most economical way. It is small in size and uses popular USB 3.0 ports, which can be connected to desktops, notebooks, tablets and other devices.

Thank you for choosing this USB 3.0 Gigabit Ethernet adapter!

Features

- Single chip USB 3.0 to Gigabit Ethernet controller.
- Compliant to USB Spec 3.0, 2.0 and 1.1.
- Support Wake-On-Lan.
- Support Crossover Detection; Auto correction; Polarity correction.
- Adaptive equalization; Crosstalk & echo cancellation; timing recovery.
- Support full Duplex flow (IEEE 802.3x) and half Duplex.
- Compliant with IEEE 802.3, IEEE 802.3u and IEEE 802.3ab.
- Support IEEE 802.3az-2010/EEE; IEEE 802.1P; IEEE 802.1Q.
- Support jumbo frame to 9K bytes.
- OS support Mac OSX; Chrome OS; Linux and driver free for Microsoft Windows.

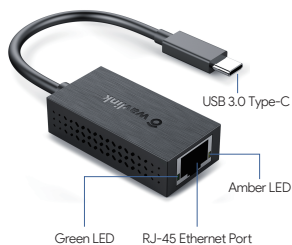
System Requirements

- PC Computer with USB-C port
- OS: Microsoft Windows; Mac OSX & Linux

In the box

- Before installation, please check the items of the package.
- 1x USB-C Gigabit Ethernet Adapter
 - 1x Quick Start Guide
 - 1x Paper made CD (driver linkage)

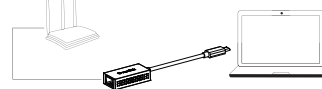
LED Descriptions



- Blinking green:** Network connection is normal.
Blinking amber: Data transmission is normal.
Off: The adapter is not receiving electrical power and no Ethernet connection is detected.

Plug and Play

- Step 1:** Plug in the adapter, then connect an Ethernet cable between your router or modem and the Ethernet port on the adapter.
- Step 2:** Just start using it when one LED is blinking.



Note: Open a browser and test the connection.

Network Configuration

Please ensure you have connected your network device, e.g. Switch/Router/DSL/Cable modem to the adapter's LAN port via an Ethernet cable and that the adapter plugs into a USB port.

Notes on Ethernet Cables

Sometimes a so-called crossover Ethernet cable is required for connection to certain network equipments. As the adapter's LAN port supports Auto-MDIX feature, it eliminates the need to use crossover cables.

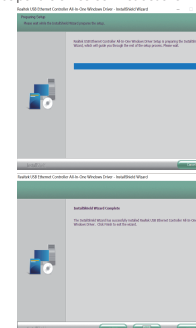
Installing Drivers

Driver software installation is required. Please download the driver from our official website (<https://www.wavlink.com/>). The URL is also available on the CD-shaped paper in the box.

Step 1: Click one of the buttons of corresponding systems to download the driver.

Step 2: Find the Zip.

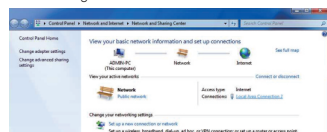
Step 3: Click to launch the executive file "setup.exe" (Windows) or "RTUNICv1.0.20.pkg" (Mac), then do as per the on-screen instructions.



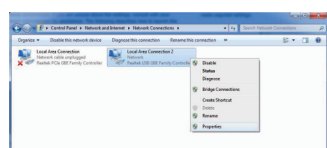
For Microsoft Windows

For Windows Users

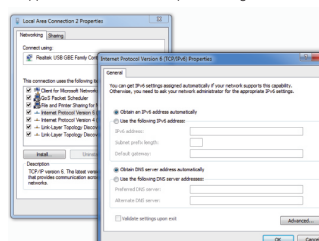
1. Right-click the network icon in the system tray and select Network and Sharing Center.
2. Click Manage network connections.



3. Right-click the Local Area Connection icon indicating your network adapter and click Properties.



4. Then the Local Area Connection Properties window appears for user to make required settings.

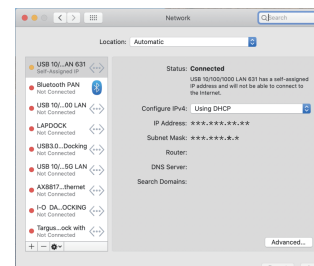


WEEE Directive & Product Disposal

At the end of its serviceable life, this product should not be treated as household or general waste. It should be handed over to the applicable collection point for the recycling of electrical and electronic equipment, or returned to the supplier for disposal.

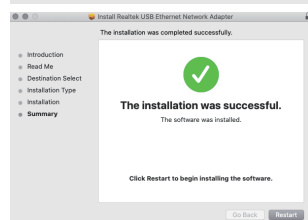
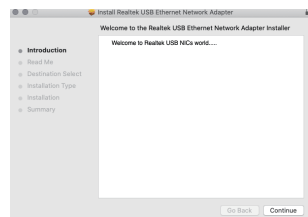
For MAC Users

Go to Apple Menu->System Preferences->Network. You could now see "connected" and "USB 10/100/1000 LAN 631...." your new Ethernet adapter should now be available.



https://www.wavlink.com/en_us/drivers/c1ba4ea08476.html

Official website: www.wavlink.com
Technical support: support@wavlink.com



For Mac OS

Step 4: Restart your computer.

Note: You may need to uninstall the existing Realtek Ethernet driver to install a new one successfully on Windows OS.