



QUICK START GUIDE

AC1900 Dual Band USB 3.0 Adapter



www.wavlink.com/en_us/Vitesse
Scan the QR code or load the link for
Quick Start Guide and Driver downloading

Vitesse

WAVLINK (@WavlinkOfficial)
WAVLINK SUPPORT (@WavlinkTechSupport)

Introduction

The AC1900 Dual Band Adapter delivers powerful wireless AC technology for your desktop or notebook computer. Simply plug the adapter into an available USB port and connect it to a wireless network to access a secure, high-speed Internet connection (2.4GHz or 5GHz). Integrated Dual Band technology will reduce Wi-Fi interference to maximize throughput for faster streaming, gaming, and Skype calls.

In the Box

- 1 x AC1900 Dual Band USB 3.0 Adapter
- 1 x USB Mini Dock
- 1 x Quick Start Guide

System Requirements

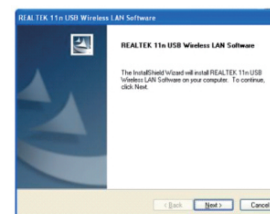
- At Least One USB 3.0 Port
- Windows XP/7/10
- MAC OS X

Installation

IMPORTANT: For proper operation, do not connect the AC1900 Dual Band USB 3.0 Adapter to your computer before you install the software. If you do, wait for the Found New Hardware screen to display and click on "Cancel", otherwise, the installation process will likely be adversely affected.

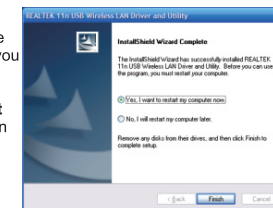
(Please download latest drivers then proceed. Driver download links are at the end of this manual.)

To start the installation, please select "USB 802.11AC Adapter".

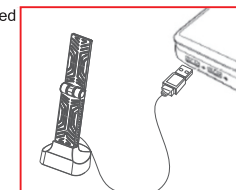


Click "Next" to proceed.

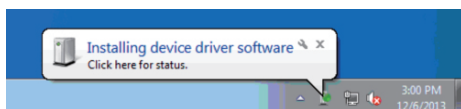
The installer will automatically install the program. When done you will see the picture like below. Please select "Yes, I want to restart my computer now" on "Finish".



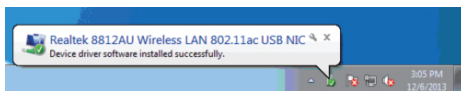
With the computer now turned on, insert the AC1900 Dual Band Adapter into an open USB port.



The status screen will pop up, which indicates that the installation is in progress. Please wait patiently for complete of the installation.



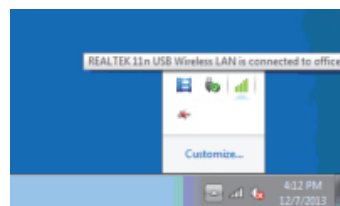
When the Completing the Found New Hardware Wizard screen displays, it indicates that the installation has been successfully completed and your AC1900 Dual Band Adapter is ready for configuration.



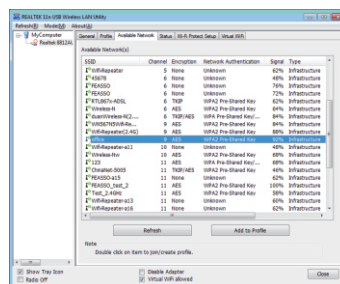
Configuration

Once the installation is complete, you can configure the AC1900 Dual Band Adapter to connect to a wireless access point (AP). The wireless configuration utility will start automatically, and you'll also find a tray icon at the lower right in your Windows systems tray.

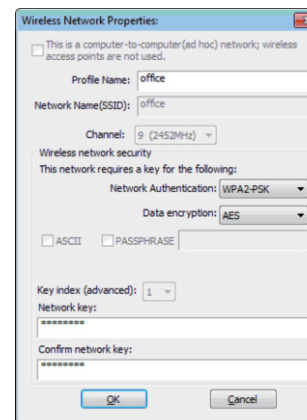
1. Click the tray icon and select the icon to Open Config Utility.



2. The configuration utility will scan for wireless networks within range. Click "Refresh" to refresh the list of available wireless networks. To join a particular network that displays, just select it and click "Add to Profile."

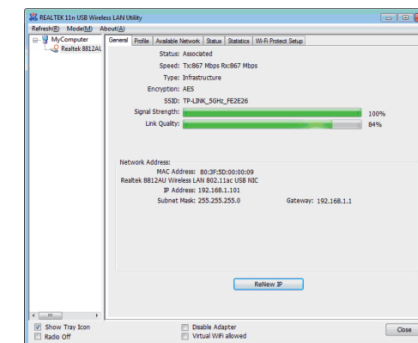


3. If the wireless network uses encryption, you need to input the correct encryption key. The configuration utility automatically suggests the correct authentication type (see the drop-down list), please select the suggested value.



NOTE: For WPA/WPA2 networks, you need to select the correct encryption type (AES or TKIP). These settings depend on how the wireless network is set up. Only the owner of the wireless network can provide the required information.

4. A window will pop up when the wireless access point is successfully connected.



Official website: www.wavlink.com
Technical support: support@wavlink.com