



## QUICK START GUIDE

### USB-C 4K Universal Docking Station with 65W Power Delivery



[www.wavlink.com/en\\_us/WL-UG76PD2](http://www.wavlink.com/en_us/WL-UG76PD2)

Scan the QR code or load the link for  
Quick Start Guide and Driver downloading

WL-UG76PD2

WAVLINK (@WavlinkOfficial)  
WAVLINK SUPPORT (@WavlinkTechSupport)

#### Safety Instructions

Always read the safety instructions carefully.  
Keep this Quick Start Guide for future reference.  
Keep this equipment away from humidity.  
If any of the following situation arises, get the equipment checked by a service technician:

- The equipment has been exposed to moisture.
- The equipment has been dropped and damaged.
- The equipment has obvious sign of breakage.
- The equipment has not been working well or you cannot get it work according to Quick Start Guide.

#### Copyright Statement

No part of this publication may be reproduced in any form by any means without the prior written permission.  
Other trademarks or brand names mentioned herein are trademarks or registered trademarks of their respective companies.

#### Disclaimer

Information in this document is subject to change without notice.  
The manufacturer does not make any representations or warranties (implied or otherwise) regarding the accuracy and completeness of this document and shall in no event be liable for any loss of profit or any commercial damage, including but not limited to special, incidental, consequential, or other damage.

#### WEEE Directive & Product Disposal

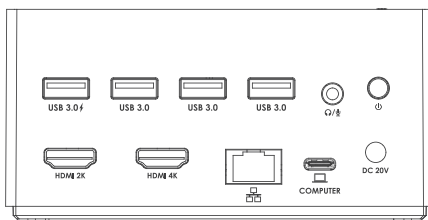


At the end of its serviceable life, this product should not be treated as household or general waste. It should be handed over to the applicable collection point for the recycling of electrical and electronic equipment, or returned to the supplier for disposal.

#### Introduction

The USB-C 4K docking station is a combo of a 4-port hub and a mini dock. With two HDMI ports, you can connect one or two monitors and this device can provide extend and mirror modes for your work or study.  
In addition, you can also connect your laptop to the upstream USB-C port and get it charged. The dock also provides you four USB interfaces so as to enable you to enjoy high speed data transfer and fast charging.

#### Overview



##### 1. 4 x USB 3.0 Ports

USB 3.0 port supports data transfer rate up to 5Gbps for your devices.

##### 2. Fast Charging Port

The leftmost USB 3.0 port is a fast charging port that supports BC 1.2 fast charging.

#### 3. 4-Pole Audio Jack

The 4-Pole audio jack provides you a two-in-one combo port for microphone, headset and stereo.

#### 4. 4K HDMI

Dual display mode supports dual Full HD (1920 x 1080@60Hz) or one 4K Ultra HD(3840 x 2160@30Hz) and one Full HD (1920 x 1080@60Hz) at the same time.

#### 5. RJ45 Gigabit Ethernet Port

RJ45 Gigabit port provides you a high speed network, in the meantime, it's also backward compatible with 10/100Mbps.

#### 6. USB-C Port

The upstream USB-C port provides your laptop with maximum 65 Watt power delivery.

#### Remark:

The driver is needed to make the docking work. Pls visit [www.wavlink.com/en\\_us/WL-UG76PD2](http://www.wavlink.com/en_us/WL-UG76PD2) to download the corresponding driver.

#### System Requirement

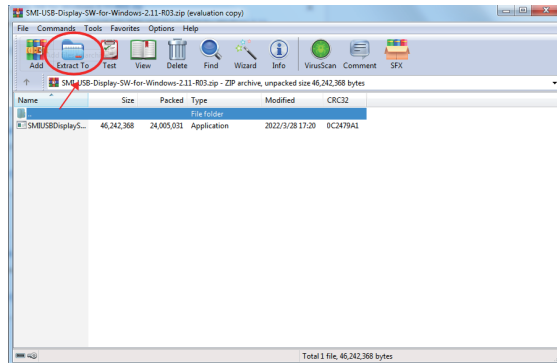
- Microsoft Windows 7/8/8.1/10 or later
- Mac OS 10.10.x or later
- Android
- Chrome OS

#### Driver Download and Installation

##### For Windows

1. Download the Silicon Motion software for Windows available here: [www.wavlink.com/en\\_us/WL-UG76PD2](http://www.wavlink.com/en_us/WL-UG76PD2)

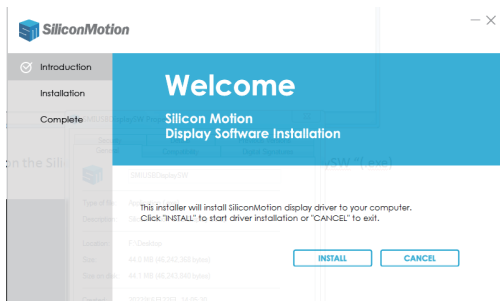
2. Extract the driver installation package to the desktop.



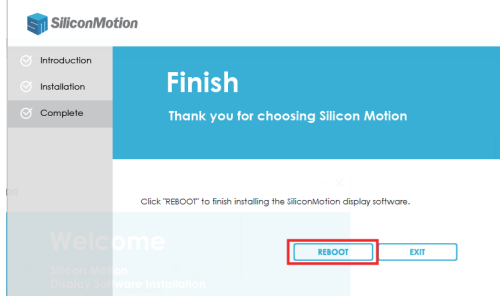
3. Double click on the Silicon Motion executable, e.g. **"SMIUSBDisplaySW" (.exe)**



4. Click **"INSTALL"**.



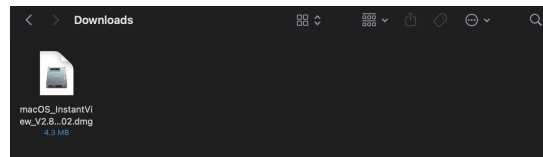
5. Click **"REBOOT"** to complete installing the Silicon Motion display software.



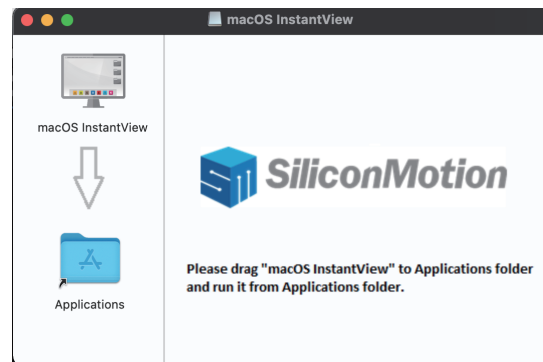
##### For MacOS

1. Download the Silicon Motion InstantView application for MacOS found here: [www.wavlink.com/en\\_us/WL-UG76PD2](http://www.wavlink.com/en_us/WL-UG76PD2)

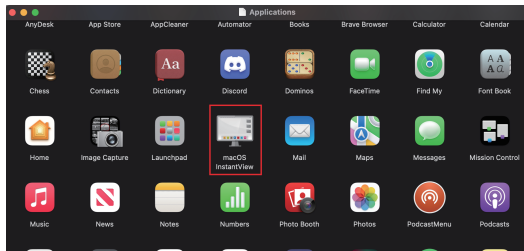
2. Double click on the file you downloaded to start the application installer.



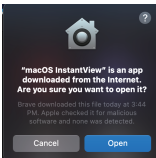
3. Drag the macOS InstantView application icon into the Applications folder in the open window.



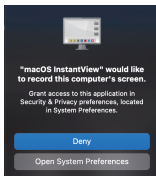
4. Navigate to your Launchpad or Applications folder to find the InstantView application and double-click to launch it.



5. Click **Open**.



6. Click **Open System Preferences**. ( Note: this should automatically open the Security and Privacy section, but if it does not, you can manually open the **Security and Privacy settings**.)



7. Click on the gold padlock at the bottom of the application window to enable changes.



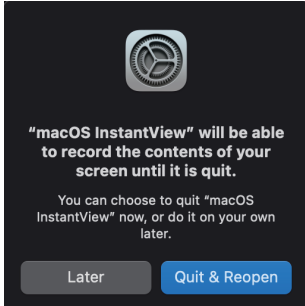
8. If prompted, enter your password and click the **'Unlock'** button:



9. Click to place a checkmark next to the macOS InstantView entry:

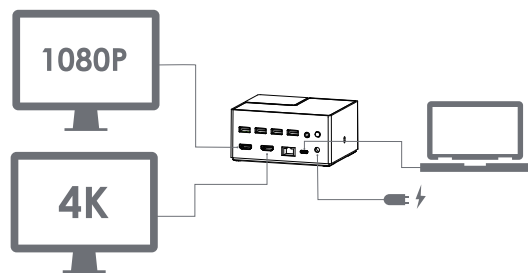


10. You will be prompted to Quit and Reopen the InstantView application in order for the change to take effect. Please do so:



11. The software has now been installed and you may connect your graphics adapter or docking station.

#### Installation

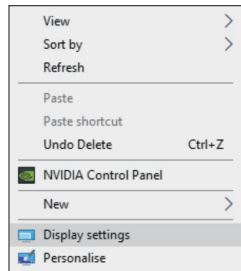


1. Plug the Universal Dock in a power outlet.
2. You can connect any USB 3.0 compatible devices to the Universal Dock, the USB 3.0 interface is also backward compatible with USB 2.0 devices.
3. The docking could support dual displays in different resolution. It could support one 3840 x 2160@30Hz monitor and one 1920 x 1080@60Hz at the same time or dual 1920 x 1080@60Hz monitors.
4. Connect your microphone, headset or stereo to 4-pole phone jack.

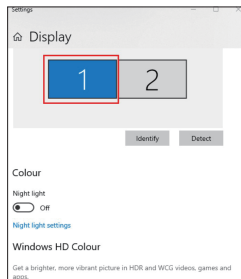
#### Display Modes

##### For Windows Users

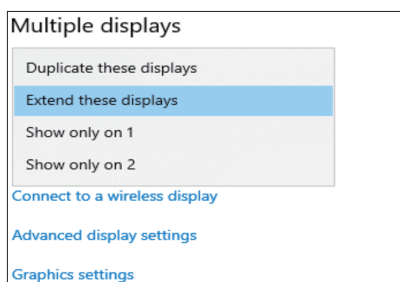
1. Right-click at any spot on your desktop and select **"Display settings"**.



2. In **"Display"**, please select either monitor 1 or monitor 2.

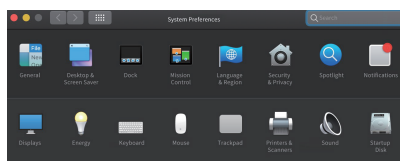


3. Scroll down to the **"Multiple displays"**, and select the mode in the drop-down list that is fit for your need.

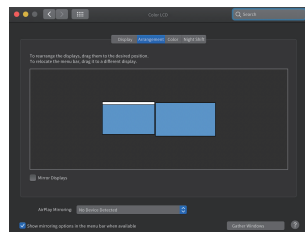


##### For Mac OS Users

1. Select **"System Preferences"** and choose **"Displays"**.

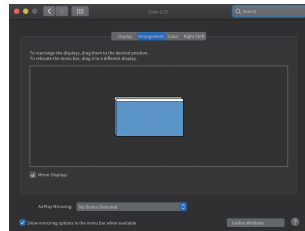


2. Click on **"Arrangement"** to change the position of displays currently connected.



Extend Mode

3. To use the mirror mode, you have to mark the **"Mirror Displays"** box below the central icon.



Mirror Mode

Official website: [www.wavlink.com](http://www.wavlink.com)  
Technical support: [support@wavlink.com](mailto:support@wavlink.com)