



Quick Start Guide

USB-C 3-Port Aluminum Hub



www.wavlink.com/en_us/WL-UH3031GC
Scan the QR code or load the link for
Quick Start Guide and Driver downloading



WAVLINK (@WavlinkOfficial)
WAVLINK SUPPORT (@WavlinkTechSupport)

WL-UH3031GC

Introduction

It is a multi-functional product. It combines with USB 3.0 Hub and USB Gigabit Ethernet Adapter. It also supports USB Type-C and is especially useful for the new MacBook. Its USB port supports 3 downstream USB 3.0 ports and 1 Gigabit Lan port.

Features

- Upstream port supports transfer rate up to 5Gbps.
- 3 downstream ports support transfer rate up to 5Gbps.
- Backward compatible with USB 3.0/USB 2.0.
- The Gigabit port supports 10/100/1000 Mbps auto-sensing capability.
- IEEE 802.3, 802.3u, and 802.3ab (10Base-T, 100Base-TX, and 1000Base-T).
- Supports Jumbo packet up to 9KB.

In the Box

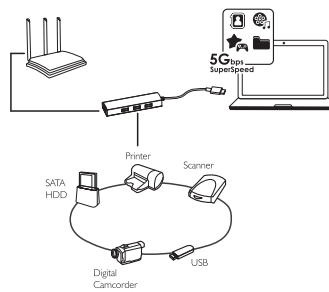
- 1x USB-C 3-Port Aluminum Hub
- 1x CD-shaped Card for Driver Link
- 1x Quick Start Guide

System Requirements

- Microsoft Windows
- Mac OSX

How it Works

USB-C 3-Port Hub and Gigabit Ethernet(A).



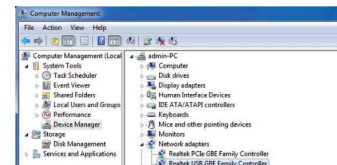
Installing Drivers

Please download the latest driver on wavlink official website, the download link is printed on the CD-shaped card.

Verifying the Driver Installation

To verify your Ethernet adapter installation, please launch Device Manager by the steps below:

On Windows: Right-click the Computer icon on the desktop and select **Properties>Device Manager**.



In the Network adapters group, a string similar to Realtek USB Family Controller should be displayed.

If there is a question or exclamation mark next to that item, then the driver is not properly installed. Please delete the item, unplug the adapter and repeat the installation steps.

Connecting to a Network

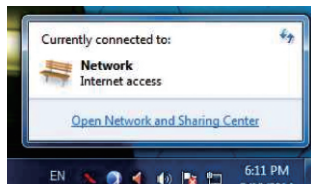
Now you can connect your network device, e.g. switch, router, DSL/Cable modem to the adapter's LAN port via an Ethernet cable.

Notes on Ethernet Cables

- Sometimes a so-called crossover Ethernet cable is required for connection to certain network equipments. As the adapter's LAN port supports Auto-MDIX feature, it eliminates the need to use crossover cables.
- When the Ethernet adapter is used in a Gigabit network, it's recommended that you use Category 6 Ethernet cable for higher transmission speed.

On Windows 2000XP, upon your connection, a message pops up in the notification area indicating your connection speed. The adapter's AutoSense feature can automatically detect the network's maximum line speed. To have a 1000Mbps connection, your network device (e.g., switch, router or DSL modem) must also support 1000Mbps. In Windows XP/Vista/7/8/8.1/10, you can view the connection speed by the steps below:

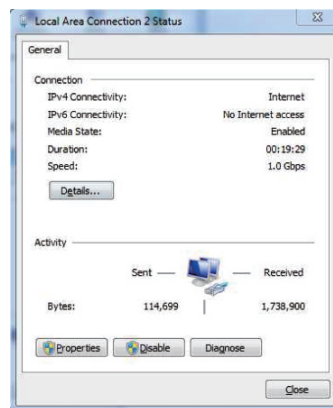
1. Right-click the network icon in the system tray and select **Network and Sharing Center**.



2. Click **View** status for the connection of your Ethernet adapter.



3. Current connection speed will be displayed among the connection information.



Configuring Network Settings

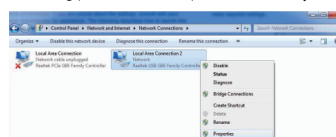
You should configure your Ethernet adapter as required according to your network environment. If you are unsure about the settings, consult with your network administrator for assistance. The following describes how to launch the network settings on Windows for your Ethernet adapter.

To configure network settings for your Ethernet adapter on Windows:

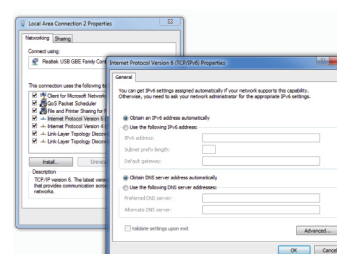
1. Right-click the network icon in the system tray and select **Network and Sharing Center**.
2. Click **Manage network connections**.



3. Right-click the **Local Area Connection** icon indicating your network adapter and click **Properties**.



4. Then the **Local Area Connection Properties** window appears for user to make required settings.



https://www.wavlink.com/en_us/drivers/4a0dbd9b1cfd.html

WEEE Directive & Product Disposal



At the end of its serviceable life, this product should not be treated as household or general waste. It should be handed over to the applicable collection point for the recycling of electrical and electronic equipment, or returned to the supplier for disposal.

Official website: www.wavlink.com
Technical support: support@wavlink.com