



Quick Start Guide

PowerLine G.hn 1500Mbps Passthrough
Network Kit



www.wavlink.com/en_us/WL-NWP505G2-B
Scan the QR code or load the link for
Quick Start Guide downloading



WAVLINK (@WavlinkOfficial)
WAVLINK SUPPORT (@WavlinkTechSupport)

WL-NWP505G2-B

Features

- Plug and play, no configuration required
- Use your home's existing electrical wiring to expand your home network by plugging into existing power outlets
- G.hn standard compliant, data transfer speeds of up to 1500Mbps, ideal for HD video or 3D video streaming and online gaming
- Passthrough socket design makes it no need to occupy the existing socket resources
- Supports up to 16 nodes and wired mesh networking
- Mains Filter for better power line communication performance
- Up to 1000 meter range over a home's electrical circuit for better performance through walls or across floors
- Supports 128-bit AES encryption for network security
- Built-in QoS assures the quality of bandwidth sensitive applications such as voice, video and online games

System Requirements

For Internet Access:

- Cable or DSL Modem
- Router
- Subscription with an Internet Service Provider (ISP)

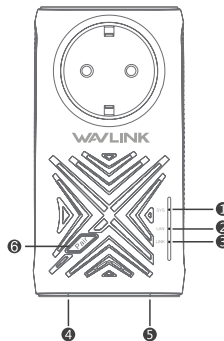
Power Socket: 100-240V/AC, 50/60Hz

For Network: 2 or more G.hn PowerLine Devices

In the Box

2 x PowerLine Adapter
2 x RJ-45 Ethernet Cable
1 x Quick Start Guide

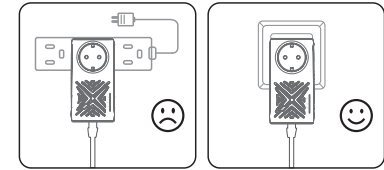
Overview



1	SYS LED	<ul style="list-style-type: none">• Solid blue: Encryption mode enabled.• Blue flash: Encryption mode didn't enable.
2	LAN LED	<ul style="list-style-type: none">• On: The Ethernet port is linked.• Off: There is no Ethernet connection.
3	Link LED	<ul style="list-style-type: none">• Solid blue: The connection signal is good.• Solid purple: The connection signal is normal.• Solid red: The connection signal is not good.• Blue flash: Pairing connection.• Off: Not connected to powerline network.
4	Ethernet Port	Connected to an Ethernet device such as a router, computer, gaming console, network storage device, or a media player.
5	Reset Button	Press and hold for 8 seconds to reset the device.
6	Pair Button	Press and hold for 2 seconds to secure your network.

Installation

Warning Before Installation

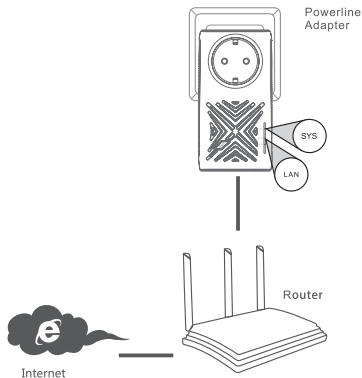


Recommendations

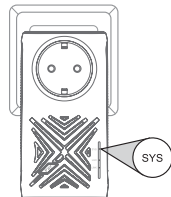
- For best results, use in a regular wall outlet without any other devices plugged in. Plugging into a power strip without a surge protector may adversely affect the performance of this product.
- Avoid using the powerline adapters in an electrical outlet that is located near an appliance that uses a lot of power, such as a washer or dryer, refrigerator, microwave, hair dryer, or air conditioning unit.
- To verify connectivity or if you are having connection problems, plug the adapters in the same room to verify whether your home's electrical wiring is contributing to the issue. The adapters' Link LED indicators will illuminate if the connection is established. Once configured you may place the adapter in the location of your choice.
- When you are confused in the process of setting up the product, or when the expected setting goal is not achieved, and you do not know how to adjust it correctly, you can try to restore the product to default factory settings (press and hold the Reset button for 8 seconds).

Installation Steps

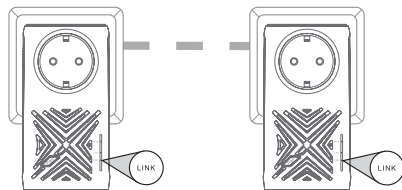
1. Plug in one of the powerline adapters and connect to your router with an Ethernet cable. The SYS LED should flash, and the LAN LED should light up.



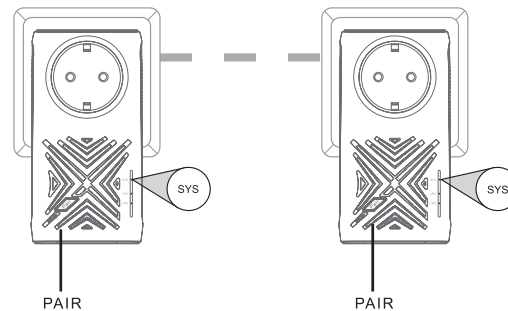
2. Plug in the other powerline adapter in the room that you want to extend your network. The SYS LED should still flash.



3. Verify that the Link LEDs on both adapters are lit (solid blue light indicates the connection signal is good; solid purple light indicates the connection signal is normal; solid red light indicates the connection signal is not good). If they are, the adapters are connected. If not, try another outlet (closer to the other powerline adapter).



4. To secure your network, please enable encryption mode. That is, press the Pair button for 2 seconds on one of the adapters. The Link LED will flash. Then, within 2 minutes, press the Pair button on the other adapter for 2 seconds. Once the SYS LEDs turn solid, verify that the Link LEDs on both adapters are lit (as in Step 3). If you want to add a new adapter, you must press the Pair buttons of the newly added adapter and one of the paired adapter, so as to avoid network chaos with the neighbors who use the same type adapters.



5. You can now connect another device using an Ethernet cable to the powerline adapter. Verify that the LAN LED is lit. Your installation is completed.

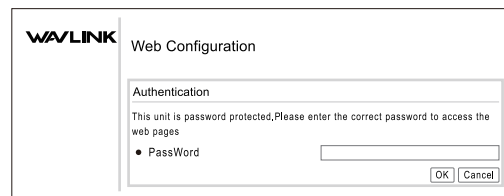
Note:

The Max 1500Mbps is a theoretical maximum channel data transfer rate which is derived from G.hn Wave-2 Powerline specifications. Actual data transfer rate and range will vary from network environment including: distance, network traffic, noise on electrical wires, quality of electrical installation and other adverse conditions.

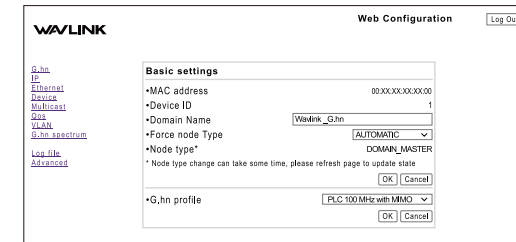
Web Configuration

1. If you want to change the Domain Name of the adapter, please go to the upper router to check the IP address of the adapter and record it, then enter the IP address in the address bar of the browser (the default password is **admin**).

Note: When you cannot get the IP address of PowerLine at the upper level, you may set your desktop computer/laptop to a Static IP like 10.10.1.XX(eg. 10.10.1.66) and Subnet Mask as 255.255.255.0, then launch your browser and enter 10.10.1.254.



2. Locate **Domain Name**, change and set it.



Official website: www.wavlink.com
Technical support: support@wavlink.com