



QUICK START GUIDE

USB 3.0 Dual Bay Docking Station for 2.5 & 3.5 inch HDD SSD



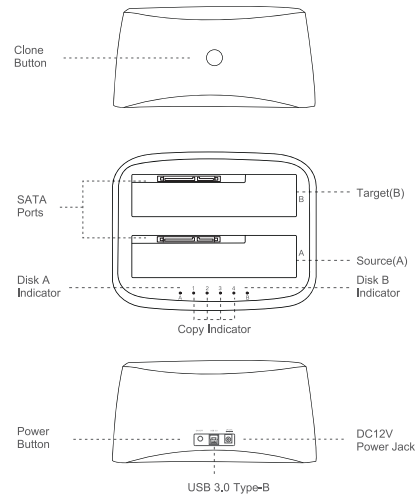
www.wavlink.com/en_us/WL-ST342U
Scan the QR code or load the link for
Quick Start Guide downloading



WAVLINK (@WavlinkOfficial)
WAVLINK SUPPORT (@WavlinkTechSupport)

WL-ST342U

Product Details



-01-

In the Box

- 1 x USB 3.0 Dual Bay Docking Station
- 1 x USB-A to USB-C Adapter
- 1 x USB 3.0 Type-B to Type-A Extension Cable
- 1 x Power Adapter
- 1 x Quick Start Guide

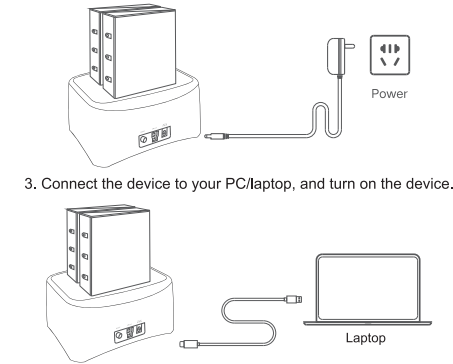
How it Works

1. Install your hard drives into the drive slots.



-02-

- Note:** Please align your hard drives in the correct direction.
2. Plug the dual bay dock in an electrical outlet.



Note: The blue indicator light of Disk A and Disk B is always on when it is working, and it flashes when reading or writing hard disk.

Offline Clone

1. Mount your disks, plug the device in an outlet, then turn it on.
2. Keep pressing for 3 seconds and short-click on "**copy button**", you can check the copy progress by 4 progress indicators.

-03-

3. Four progress indicators will be on when finishing copy and the buzzer will ring "**beep**" sound for three times.

Notice:

- This device cannot bi-directionally copy, you can only copy from Disk A (source disk) to Disk B (target disk).
- Please use "**offline copy**" carefully, because it will format your hard drive that mounted in Disk B. After copying, the capacity and partition of Disk B will be consistent with Disk A, if you need to restore the capacity of B, you should repartition the disk.
- To perform offline copying normally, the capacity of Disk A must be less than that of Disk B.
- There shouldn't be any bad block in Disk B track, otherwise the copying process may fail.

How to Take Out

1. Safely remove hardware on your PC/laptop.
2. Press the power button to turn it off.
3. Disconnect the USB cable and power adapter.
4. Take out your hard drives.
5. After finishing the offline copy, please set Disk B to online mode under "**Disk Management**" interface of computer management.

Note: In order to avoid product damage or hidden dangers, please correctly connect and remove the hard drive dock.

-04-

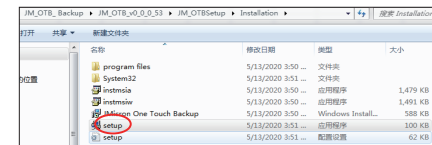
Specification

- Supports UASP transport protocol.
- Supports OTG (on-the-go) function.
- Supports SATA III, and backward compatible with SATA II / I.
- Supports 2.5/3.5-inch SATA hard drive.
- Transfer rate up to 5Gbps when connected to a USB 3.0 port.
- Supports offline copy function with one button.
- Supports Windows/Linux/Mac OS X.

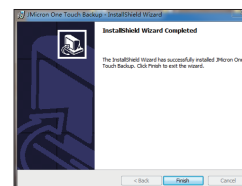
One-Click Backup

Download

1. Please download the "**JM_OTB**" on www.wavlink.com. (**Supports> Driver>** Filter by "**Storage**" to locate and download the corresponding file).
2. Install it on your PC/laptop.
- 1) Please locate the "**setup.exe**" file then double-click it to start installing.



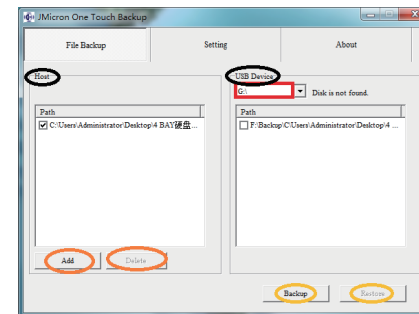
- 2) Follow the on-screen instructions to continue the installation.



-06-

Application Usage

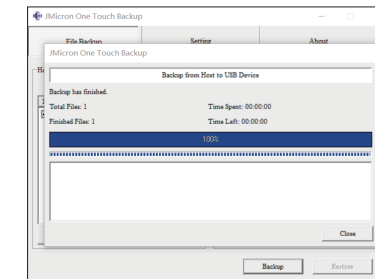
Double-click **JM_OTB** icon on the desktop to operate the program. The initial screen presents two options for Backup Files: **Backup** or **Restore**.



1.Data Backup

- (1) You will see disk letter at **USB Device (Ex. G:)**. Select a disk letter you want to use.
- (2) Click **Add** in the Host panel. You can click on the folders you want to select for backup; you can also click **Deleted** to give up backup of some directories.
- (3) Then, click **Backup**. You can also simply press the **Offline Clone Button**. After that, you can see the transfer information and a status progress bar.

-07-



- (4) Backup files is stored in a sub-folder called **Backup**

2. Data Restore

- (1) Select what you want to restore from the drop-down menu in the USB Device panel
- (2) When the desired folder is selected (tick the box), corresponding one will display in the **Path** window of the Host panel
- (3) Then, click **Restore** to start restore. After that, you can see the transfer information and a status progress bar.

-08-

Safety Notes

- Works with USB 12V \pm 5% power supply and exceeding the standard voltage range may cause damage to the product or cause potential safety problems.
- Do NOT disconnect the hard drive docking station and the hard drive during data transferring in case of files missing or the disk damage.
- Supports transfer rate up to 5Gbps when connected to a USB 3.0 port, and backward compatible with USB 2.0.
- Keep out of children's reach in case of potential safety problems by accidentally touching the power plug.
- When the product is not used for a long time, please turn off the power supply or unplug the power supply to avoid the potential safety hazard caused by leakage.
- Please backup hard drive data in advance before hard drive partitions for formatting.
- Falling down, squeezing, impacting and throwing may damage the product.

Official website: www.wavlink.com
Technical support: support@wavlink.com

-09-

-05-