



QUICK START GUIDE

USB-C 10G Quad Display 4K@60Hz
Universal Dock
with 100W Power Delivery



www.wavlink.com/en_us/WL-UG69PD8-Pro
Scan the QR code or load the link for
Quick Start Guide and Driver downloading

WL-UG69PD8 Pro WAVLINK (@WavlinkOfficial)
WAVLINK SUPPORT (@WavlinkTechSupport)

Safety Instructions
Keep this Quick Start Guide for future reference.
Keep this equipment away from humidity.
If any of the following situation arises, get the equipment checked by a service technician:
• The equipment has been exposed to moisture.
• The equipment has been dropped and damaged.
• The equipment has obvious sign of breakage.
• The equipment has not been working well or you cannot get it work according to Quick Start Guide.

Copyright Statement
No part of this publication may be reproduced in any form by any means without the prior written permission.
Regardless of any direct acknowledgment elsewhere in the body of this document, WAVLINK hereby acknowledges that all trademarks, registered trademarks, service marks, and other protected names and/or symbols contained in this manual and related documents are the property of their respective holders.

Disclaimer
Information in this document is subject to change without notice. The manufacturer does not make any representations or warranties (implied or otherwise) regarding the accuracy and completeness of this document and shall in no event be liable for any loss of profit or any commercial damage, including but not limited to special, incidental, consequential, or other damage.

WEEE Directive & Product Disposal
At the end of its serviceable life, this product should not be treated as household or general waste. It should be handed over to the applicable collection point for the recycling of electrical and electronic equipment, or returned to the supplier for disposal.

Overview

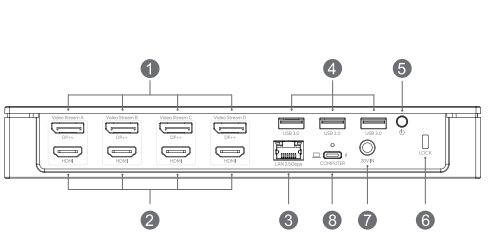
Front

- 1 USB-C (PD 30W)
- 2 SD/TF card slot
- 3 USB-A (10Gbps)
- 4 Power LED
- 5 Audio/Mic port



Back

- 1 4 x DisplayPort
- 2 4 x HDMI port
- 3 2.5G Ethernet port
- 4 USB-A (5Gbps)
- 5 Power switch
- 6 Security lock
- 7 DC in (20V/9A 180W)
- 8 USB-C (host, PD 100W)



System requirement

- USB-C PC computer supports USB Power Delivery and Thunderbolt 3 PC computer
- CPU Processor: Core i7 or above
- RAM: 4GB or above

Supported Operating Systems:
Attention: It's worth noting that displaylink driver installation is required.
Windows: Windows 11, Windows 10, Windows 7, Windows 8.1, Windows 8
Mac OS: Ventura 13, Monterey 12, Big Sur 11, Catalina 10.15, Mojave 10.14

In the box

- 1 x USB-C 10G Quad Display 4K@60Hz Universal Dock
- 1 x 2-in-1 USB-C to USB-C Cable with USB-A Converter
- 1 x DC20V/9A 180W Power Adapter
- 1 x AC Power Cable
- 1 x Cable Holder
- 1 x Quick Start Guide

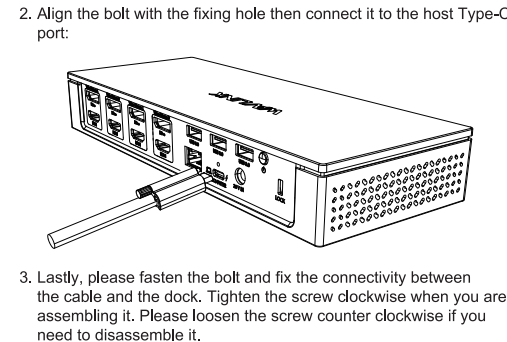
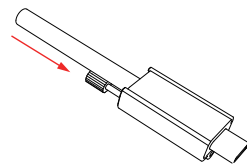
Features

1. Four sets of HDMI/DP ports support quad-display up to 4K@60Hz.
2. The USB-C (host) charges your laptop with max.100W power.
3. One Ethernet port provides 2.5G network, and is backward compatible with 1000/100/10Mbps network.
4. The USB3.1 port on the front side supports BC1.2 fast charging and max. 10Gbps data transmission.
5. Integrated SD V4.0 Card Reader with SD/Micro SD slot supports UHS-II theoretical bus speed up to 312MB/s.
6. The USB-C port on the front side supports 30W PD charging for any device that complies with USB PD charging.

Connect your laptop to the dock

The cable holder is designed to tighten the USB-C port. If you are worried that the cable might loosen, herein please follow the steps to install the cable holder.

1. Insert the cable into the cable holder according to the arrow direction shown in the following picture:

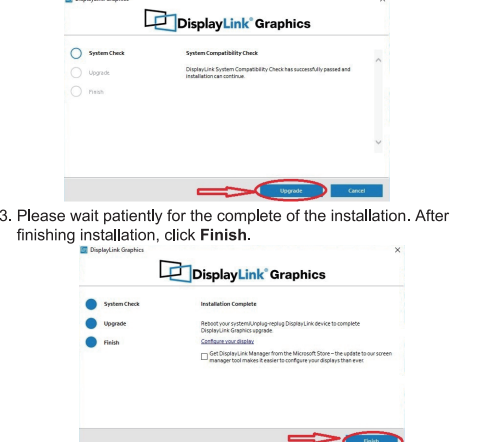


- Note:**
1. The USB-C (host) port charges your laptop with maximum 100W power.
 2. The Cable Holder just is only used for fixing the cable to prevent accidental touch and loosening. After assembling it, please do not pull it hard to avoid damage to the interface. Please follow the above instructions if you need to disassemble it.

Driver Installation

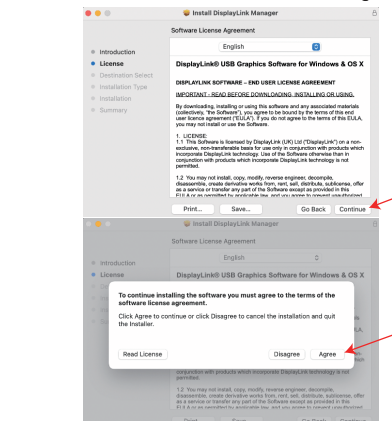
Before using this docking station, please enter the www.wavlink.com/en_us/WL-UG69PD8-Pro and filter by "SUPPORT" > "Driver" > "USB DISPLAY" > "WL-UG69PD8-Pro" and download the corresponding driver for this docking station and install it as the following steps:

- For Windows**
1. Locate the downloaded folder and double-click the driver file you just downloaded.
 2. If there is no DisplayLink Driver in your Windows computer, click **Install** and follow the guide to install the Driver. If your Windows host has ever installed the Driver, open the file and then click **Upgrade**.



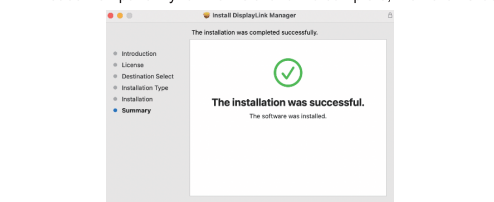
- For Mac**
1. Double-click the driver file you just downloaded, navigate to the **Install DisplayLink Manager** window, click **Continue**.

2. Click **Continue** to the next window, then click **Agree**.

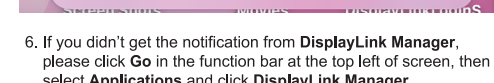


3. Please wait patiently for the complete of the installation. After finishing installation, click **Finish**.

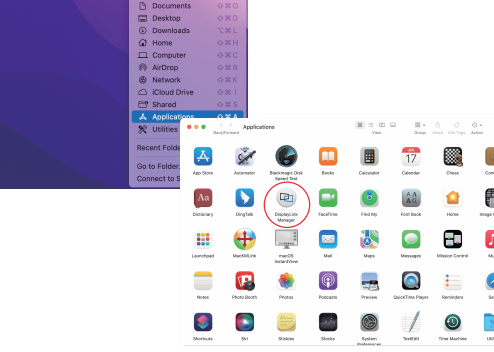
3. Click **Install** and choose **Use Password...**, then enter the screen password and click **Install Software**.
4. Please wait patiently for the installation to complete, then click **Close**.



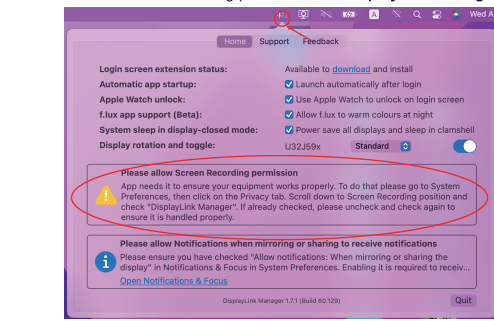
5. If you have enabled notifications from DisplayLink Manager, it will remind you to allow screen recording when it detects that this permission is missing.



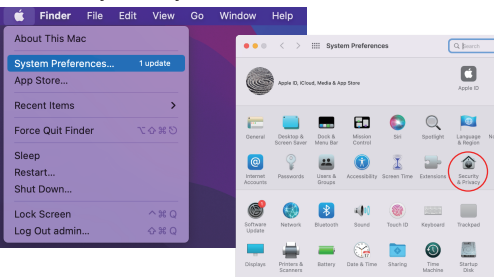
6. If you didn't get the notification from DisplayLink Manager, please click **Go** in the function bar at the top left of screen, then select **Applications** and click **DisplayLink Manager**.



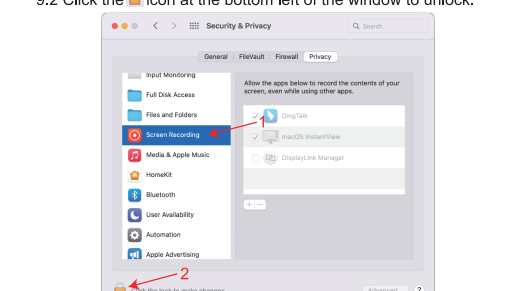
7. Click the **DisplayLink Graphics** icon in the function bar at the top right of the screen, and the notification will also appear in the DisplayLink Manager window. A warning is found here, you should allow the screen recording permission for DisplayLink Manager.



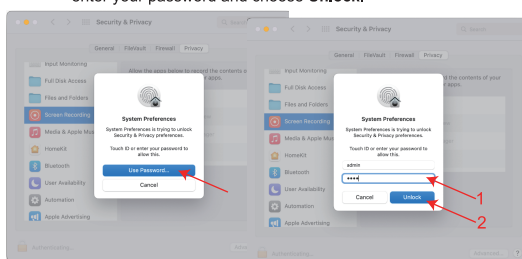
8. Click the **Apple icon-->System Preferences**, then double click **Security & Privacy**.



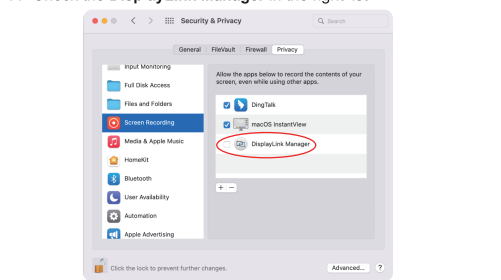
9. Enable **Screen Recording** to allow the DisplayLink Manager application to capture pixels and send them to your USB peripheral.
- 9.1 Select **Screen Recording** in **Privacy** tab.
- 9.2 Click the **icon** at the bottom left of the window to unlock.



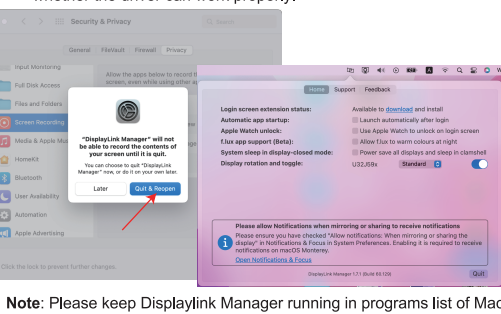
10. When the small window pops up, choose a password or use your fingerprint to unlock.
- 10.1 If you use password to unlock, and click **Use Password**, then enter your password and choose **Unlock**.



- 10.2 If you use fingerprint to unlock, it will jump directly to the next step.
11. Check the **DisplayLink Manager** in the right list.



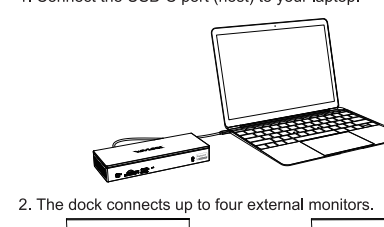
12. Click **Quit & Reopen** to restart the driver, then you can click the **DisplayLink Graphics** icon in the function bar at the top right of the screen to ensure whether the warning has been lifted and whether the driver can work properly.



Note: Please keep DisplayLink Manager running in programs list of Mac OS so that the HDMI and DP port of the Dock can display properly.

How to set up

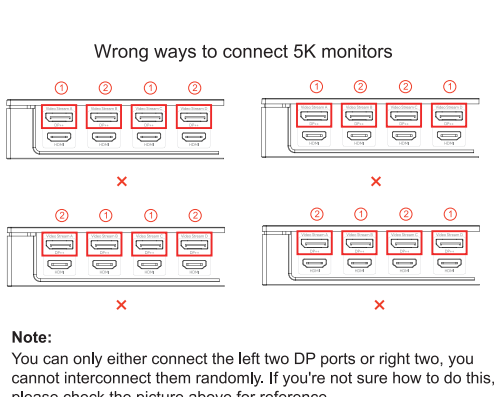
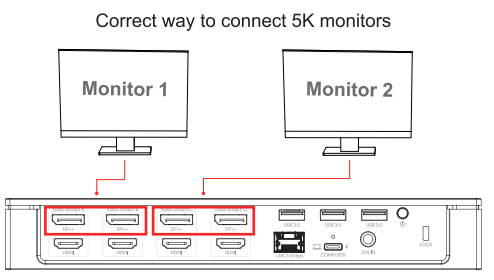
- To extend external monitors, please do as follows:
1. Connect the USB-C port (host) to your laptop.



2. The dock connects up to four external monitors.

Note:
In each video stream group you can only use one port, thus, quad-display out of four groups

5K Display



Note:
You can only either connect the left two DP ports or right two, you cannot interconnect them randomly. If you're not sure how to do this, please check the picture above for reference.

Supported resolution list

1. When using one set of video stream:

Group	Interface	5K	4K	2K	1K
Video Stream A (for B or C or D)	HDMI	5120x2880 P60	3840x2160 P60	2560x1600 P60	FHD
	DP++				

Note:
If you plug in both HDMI and DP within the same video stream, DP will be working, HDMI will not.

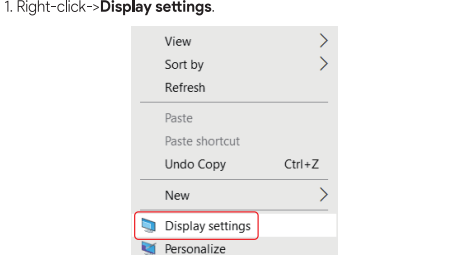
2. When using multiple sets of video streams:

Group	Interface	5K	4K	2K	1K
Video Stream A	HDMI	5120x2880 P60			
	DP++				
Video Stream B	HDMI				
	DP++				
Video Stream C	HDMI				
	DP++				
Video Stream D	HDMI				
	DP++				

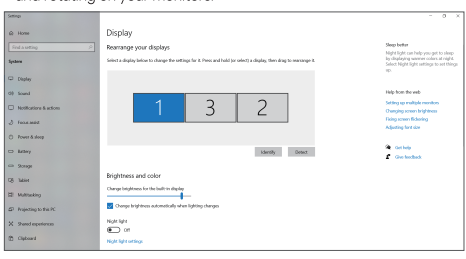
Display settings

Before configuring the settings, please make sure this docking station has been connected to your laptop and monitors correctly.

- For Windows**
1. Right-click-->**Display settings**.

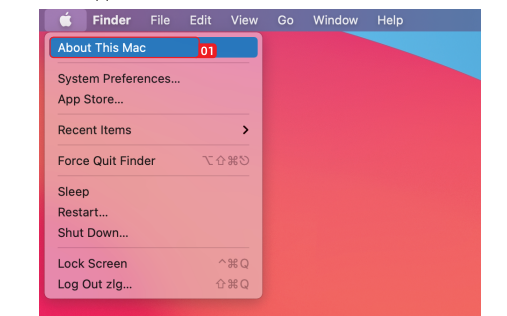


2. In 'Display', you can enjoy different operations of duplicating, extending and rotating on your monitors.

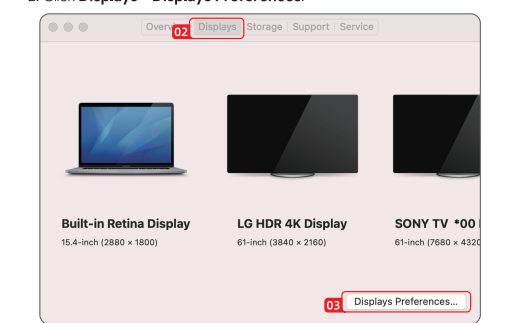


For Mac OS X12 or Below

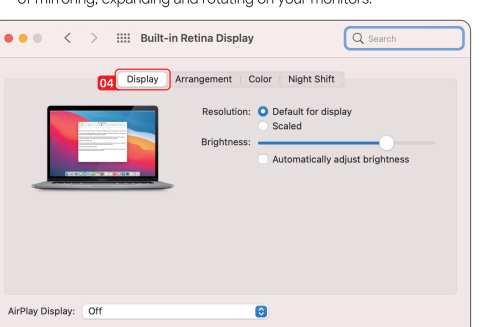
1. Click Apple icon-->**About This Mac**.



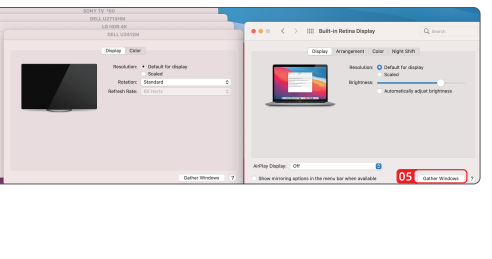
2. Click **Displays-->Displays Preferences**.



3. Select **'Display'** from the list, then you can enjoy different operations of mirroring, expanding and rotating on your monitors.

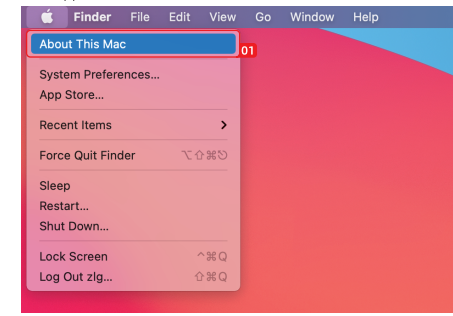


4. Or click **'Gather Windows'** to gather all connected displays and make separate settings.



For Mac OS X13

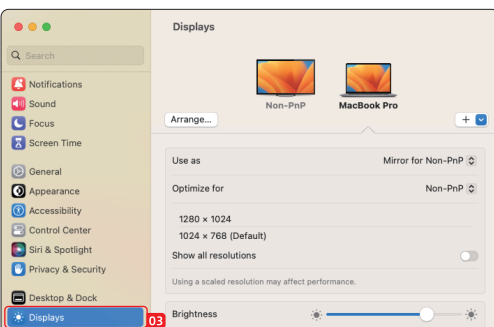
1. Click Apple icon-->**About This Mac**.



2. Click **'More Info..'**



3. Select **'Displays'** from the list, then you can enjoy different operations of mirroring, expanding and rotating on your monitors.



FAQ

- Q: Why does my dock get hot when I use it?**
A: This is what it's supposed to be like when the dock is working, don't worry about the heat. But we suggest that you put the dock in a relatively open area for a better heat dissipation.

- Q: Why is there no display after I connect the dock to the USB-C port of my laptop?**
A: Please make sure that your laptop is the latest version, and you have installed the latest displaylink driver. At last, please check if the Type-C port of your laptop port supports data transmission.

- Q: Does this dock support octa-display?**
A: No, it doesn't. The dock supports maximum 4 monitors with either video port of each set.



Thank you for purchasing WAVLINK product!

Official website: www.wavlink.com
Technical support: support@wavlink.com